

MANUFACTURERS OF ALL TYPES OF FOUNDRY EQUIPMENTS.

[www.akshayfoundryequipments.com](http://www.akshayfoundryequipments.com)

Advance  
Machines for  
**PRECISE**  
Castings



*Foundrymen's FIRST Choice*



A background image showing a close-up of two hands shaking in a firm grip. The hands are positioned over a blurred city skyline at night, with lights from buildings visible. The image is tilted slightly to the right. A white diagonal line cuts across the bottom right corner of the image.

# Advance Machines for PRECISE Castings

*Foundrymen's **FIRST** Choice*



- Welcome and Index
- Company Brief and Profile
- Facilities
- Products
- Customers
- Contact Information

# INDEX

# Company BRIEF



The strength of our organization comes from a uni-field philosophy based on our long-term market satisfaction and expansion. Receiving orders from our local and domestic customers, we are able to lower the average production cost and supply competitively priced products and sustain the productivity and consistency in quality.

We capitalize the strengths of our core capabilities in design and manufacturing of complex equipments, versatile manufacturing setup and technology; experienced quality management based on recognized standards. This system enable us to win the trust and long term business from our valuable customers and ensure our success in the fiercely competitive market.

A diligent qualified and well-trained talent pool of people works cohesively to deliver solutions to meet and exceeds customer expectation.

Our products are manufactured with state-of-art technologies, machineries and using high quality materials.



Company Name	Akshay Foundry Equipments (No of Units 3)
Year of Established	2008-09
Constitution	Proprietary (Proprietor Mr. Baburao B. Sawant)
Key Person	Mr. Akshay B. Sawant
Postal Address	Gat No 59, Plot No 711, Sambhapur - Tasgaon Road , Sambhapur , Tal - Hatkanangale, Dist - Kolhapur, (MH) 416122 ,INDIA.
Email	akshayfounders@gmail.com
Contact Nos.	+91 08698456310 / +91 09860742943
PAN No.	CIXPS8761D
GSTN No.	27CIXPS8761D1ZD
Udyam Aadhar No.	UDYAM-MH-15-0016026
Total Area/Builtup Area	54000Sq. Ft. / 38000 Sq. Ft.
Capacity	One Sand Plant per month
Manpower	48 Nos Including 16 Engineers
Branches	Gujraat , Delhi





Company Entrance (Shed No. 1)



Akshay's Team and Shed No. 2



Akshay' Design Team with Advance Technology



Spare Parts & Store Department



Spare Parts & Store Department



Spare Parts & Store Department



Plasma Cutting Machine



Sand Plant Control Panels



Quality Casting



Shri Datta Founders And Engineers Pvt Ltd

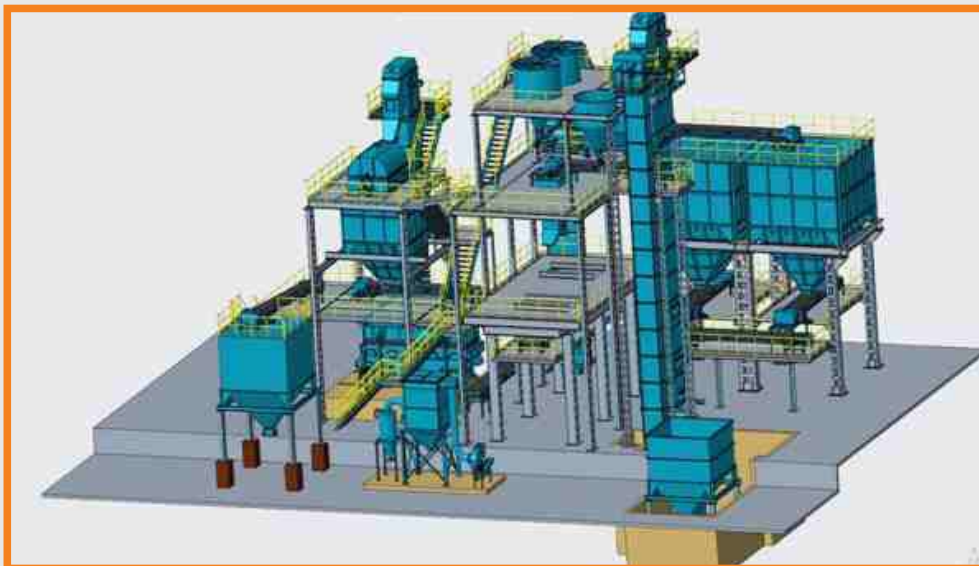
## GREEN SAND PLANT

Akshay manufactures Green sand plant 10 TPH TO 70TPH suitable for medium scale foundry and foundries having high pressure machines suitable for flaskless and with flask line.

### SAND PLANT DIFFERENT MODELS

Akshay manufactures sand plant semi-automatic suitable for medium scale foundry upto 10 to 15 TPH.

Akshay manufactures fully automatic sand plant with automatic mould handling and auto additives system for jolt squeeze moulding machine from capacity 10 to 30 TPH.



## SAND PLANT FOR HIGH PRESSURE LINE

### SAND PLANT DIFFERENT MODELS

Akshay manufactures fully automatic sand plant suitable for high pressure line with flask and without flask line from 30 TPH to 70 TPH.





## VIBRO SAND COOLER

(Capacity 5 Tons to 70 Tons/ Hr)

Akshay make Fluidized bed vibro sand cooler ensures effective cooling of sand by means of water and air as media for cooling sand. Reconditioning of system sand does this cooler with incorporating cyclone and dust collector.

### FEATURES

Akshay make Vibro Sand Cooler seamless pipes of stainless steel grade Ss304 are used for better sand cooling and to prevent from corrosion and leakage of pipes.

Vibro motors used are Imported Italvibro / Oli Make.

Vibro sand coolers are supplied with Cyclone, Blower and Dust Collector for removing fine dust and to maintain active clay content.



## INTENSIVE SAND MIXER

(Capacity 250kgs to 1000 kgs)

Akshay make Intensive mixer assures homogeneous mixing of return sand, water, and additives by means of high speed blender mounted on the shell top and with set of main arm inside the shell. Which gives high compression strength for the prepared sand.

### FEATURES

Inside bottom and side of shell is lined with ceramic tiles which ensures no sand sticking to bottom and side.

Provided with load cell system with batch hopper (option)

Using Sew gear boxes with direct drive so mixer will give recommended kg of prepared sand.

Provision on the outer shell is given to fit on line sand testing equipment.



## VIBRO SHAKEOUT / FEEDER MACHINE

(Capacity 500 kg to 5000 kg) / (Capacity- 5 Tons to 70 Tons/ Hr)

AKSHAY manufactures vibro shakeout machine with unbalanced vibromotors. The High amplitude vibration makes the sand to separate from castings very effectively.

### FEATURES

Driven by vibro motors of imported make like Italvibro and Oli make.

Very less noise because of vibromotors.

Stress relief process assures no crack during vibration.

Ensures consistent flow of sand from knockout to belt conveyor.

Driven by vibro motors of imported make.

Increases belt life after incorporating this machine below knockout.

Stress relief process ensures crack proof machine.



## BELT CONVEYORS

(Capacity 5 Tons to 70 Tons/Hr)

Akshay manufactured belt conveyors used to convey sand from one point to other point in horizontal or in inclined position.

### FEATURES

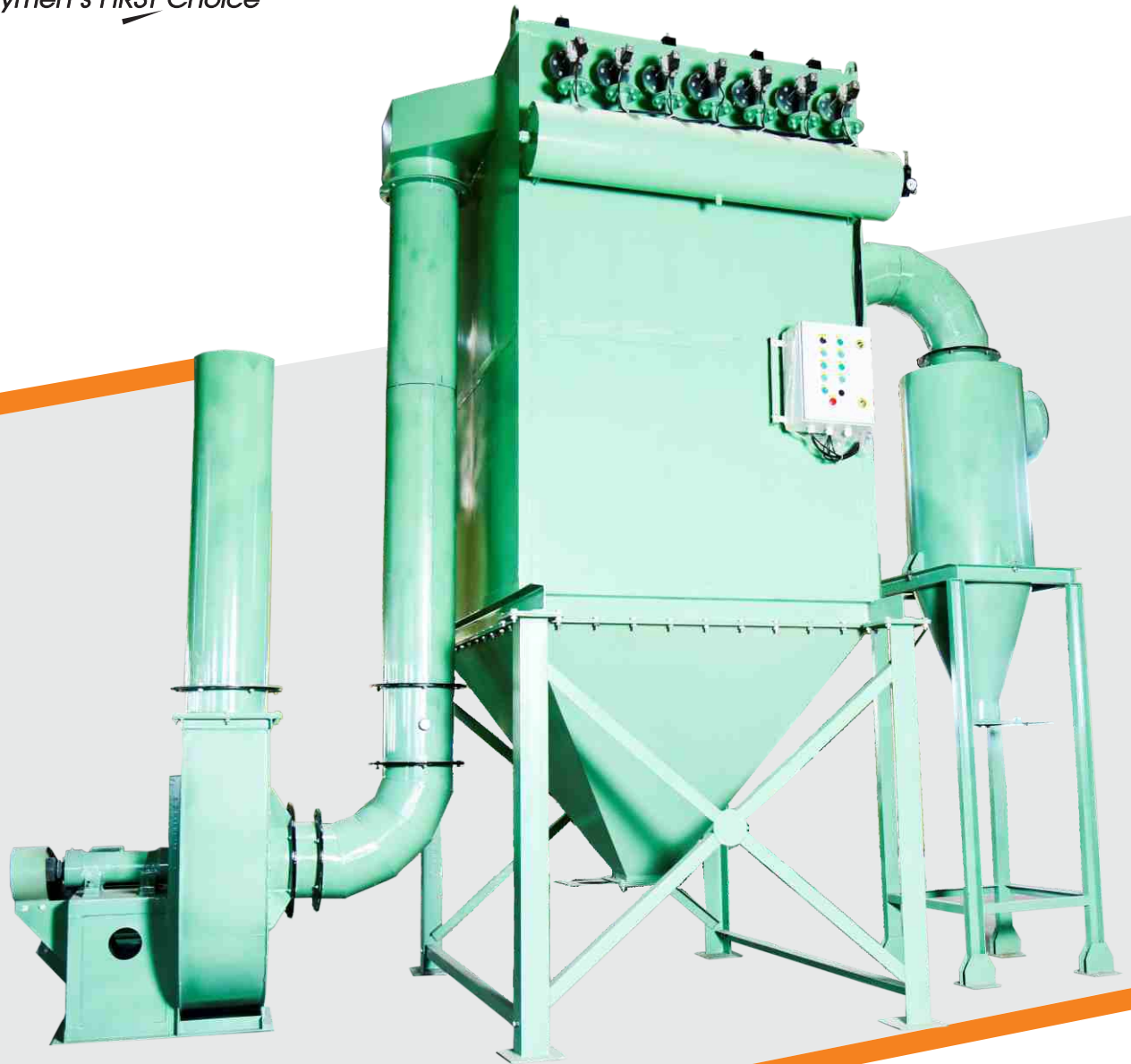
Very rigid structure to carry load.

Direct drive shaft mounted gear box used which having more capacity to carry load and also less maintenance as compared to separate gear box and motor combination.

Drums of conveyors manufactured from seamless pipe having more thickness and conical shape is given to outer surface of drum and then thick rubber lining is done on that so no possibility of slippage of belt.

High temperature resistance belts are used as per application.

For removing sand from the belt scrubbing rollers are used at the end of belt conveyor.



## DUST COLLECTOR

(Range- 9 bags to 108 bags)

### FEATURES

Vertical filterbags with ventury type cartridge.

Easily separates and collects heavy and fine dust.

Auto pulse jet with quick exhaust valve.

Sequential timer provided for auto cleaning of bags.



## BUCKET ELEVATOR

Capacity 5 Tons to 80 Tons/Hr.)

AKSHAY manufactures Bucket Elevators to carry sand in vertical direction with less floor space.

---

Different Bucket elevator casing sizes are available like 600 x 300, 800 x 400, 600 x 1200, 1500 x 750.

---

Also sand carrying bucket are also available in different sizes as per capacity of sand plant.



## POLYGONAL SIEVER

(Capacity 10 Tons/Hr -70 Tons/Hr)

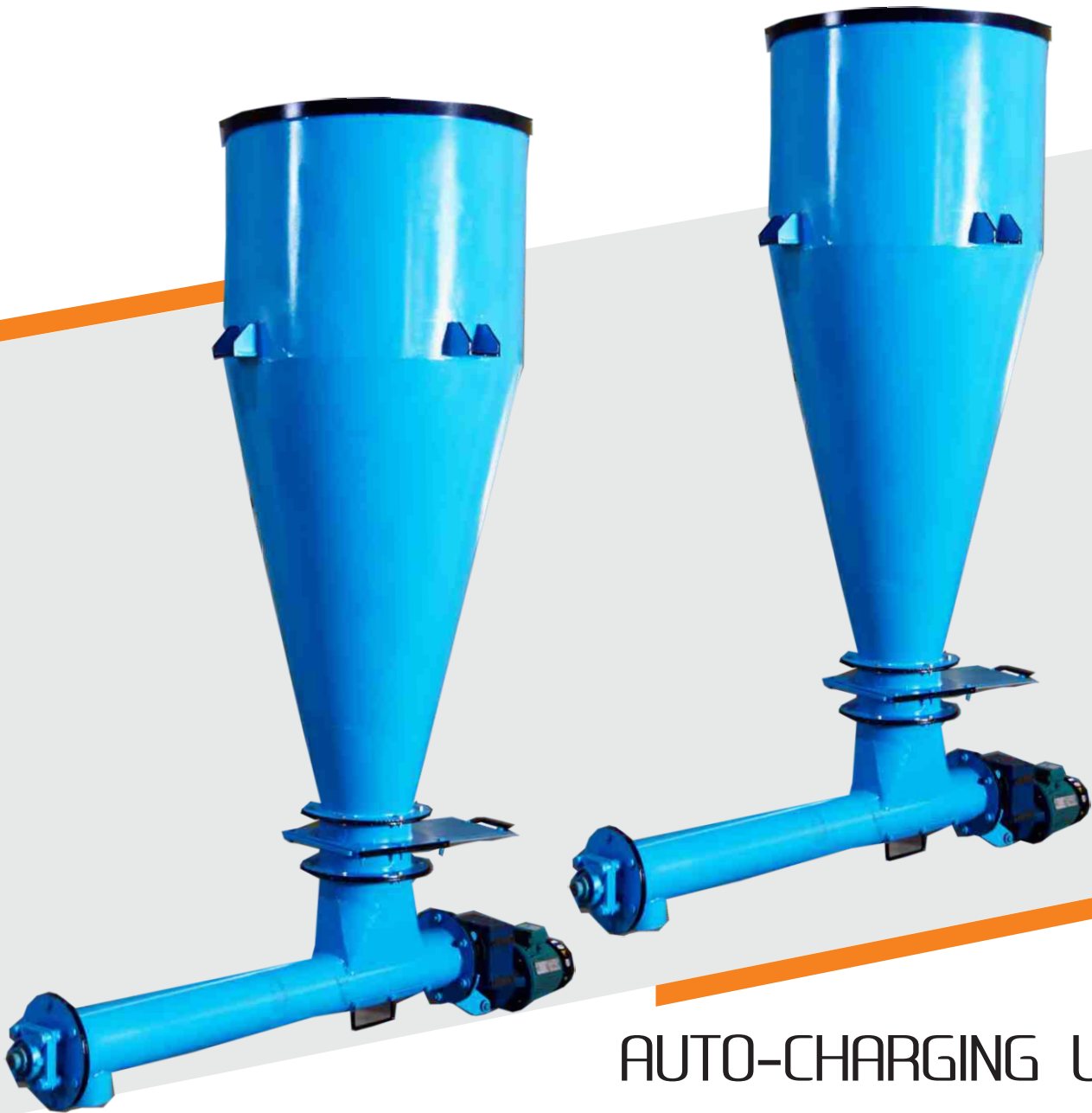
Akshay make polygonal siever is specially designed to sieve the used sand to get the consistent good quality of sand.

Polygonal siever drum is made in segments and stainless steel mesh is used to sieve the for longer life of mesh.

Polygonal siever drum inlet chute is also made in stainless steel plate.

Polygonal siever shell from inside is coated with 3 layers of FRP sheets and after doing FRP whole shell is bolted to achieve longer life of FRP coating and shell of polygonal siever.

Discard sand lumps chute is so designed that no core pieces will enter into the sieved sand.



## AUTO-CHARGING UNIT

Akshay manufactures automatic charging system for charging the sand in mixer on weight basis for return sand, new sand, additives and water on time basis.

### FEATURES

It gives consistency in moulding sand quality.

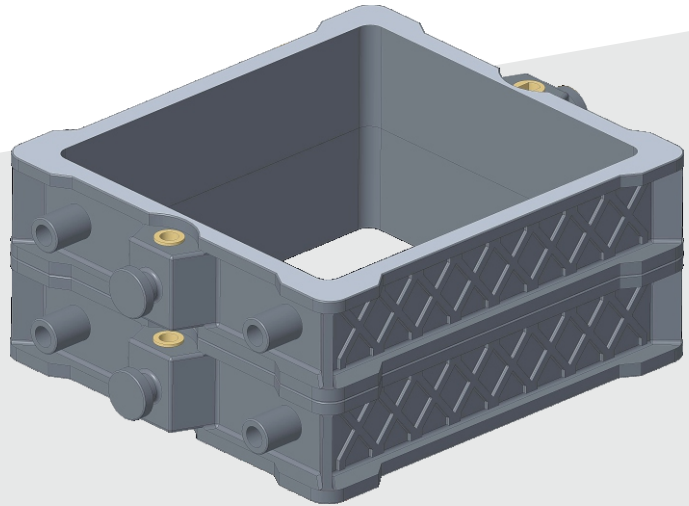
Weighing of each batch has been done with load cell system so required qty of bentonite and coal dust is added so saving of additives is possible.

Reduction in castings rejection percentage related to sand as it gives consistency in sand quality.



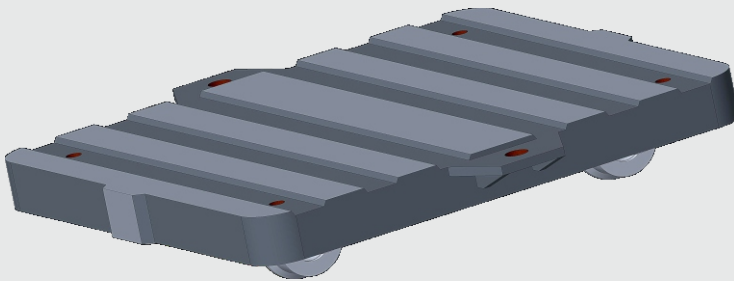
## MOULDING BOX FOR JOLT SQUEEZE LINE

Size 510 560 To 800 X 1000mm and  
any required size as per customer requirement



## PALLET CAR FOR JOLT SQUEEZE LINE

Size suitable for Box size 510 X 560 To  
800 X 1000 mm and any required size as  
per customer requirement

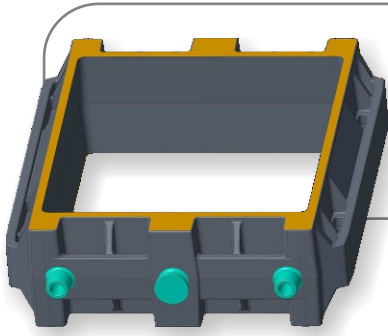


# MOULDING BOX, PALLET CARS, JACKETS & WEIGHTS

CASTING & MACHINING FACILITY IN ONE ROOF

We manufacture Akshay make moulding Boxes and Pallet Cars for conventional line in C. I. and S. G. Iron, Also manufactures HPML line Boxes, Jacket, Weights as per customer requirement .

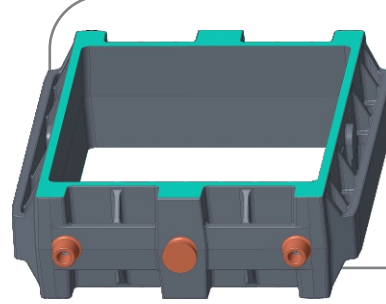
Akshay manufactures moulding Boxes size 510 X 560 mm to 800 X 1000 mm with Bush fitted.



### **HPML TOP BOX**

FOR TIGHT FLASK LINE

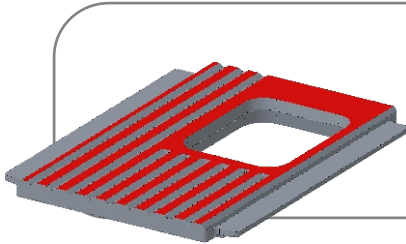
Size as per customer requirement



### **HPML BOTTOM BOX**

FOR TIGHT FLASK LINE

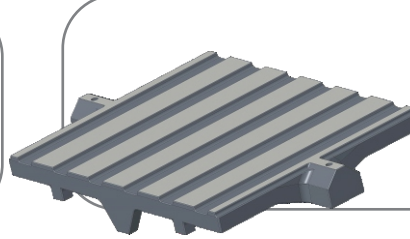
Size as per customer requirement



### **MOULD WEIGHT**

FOR FLASKLESS LINE

Size as per customer requirement



### **PALLET CAR**

FOR FLASK & FLASK LINE

Size as per customer requirement

## **OUR FEATURES**

- In house casting and machining facility to minimise cost of Boxes and pallet cars.
- All operations like top bottom facing C/C drilling, Spot facing etc are done on VMC machine only to achieve higher accuracy and precision.
- Top and Bottom both face are machined completely on VMC to get parallelity of the faces to each other.
- C/C Drilling will be carried out on VMC machine only to get correct C/C.





Vishwakarma Founders  
Pvt. Ltd.



Sapre  
Precision Technologies



Atharva Foundry  
Pvt. Ltd.



Yashoda Iron  
Pvt. Ltd.



Laxmi Pumps Pvt. Ltd.



Jadhav Industries



Kotecha Steel Forge & Cast  
Industries Pvt. Ltd.



Mayura Steel Pvt. Ltd.



Magna Samarth Group



Lamina Foundries Limited



PLANET METAL



Yash Metallics Pvt. Ltd.



SANSIDDHI TECHNOCAST  
PVT. LTD.

PADMAVATI FORGING & CASTINGS  
PVT. LTD.



SHRI DATTA FOUNDERS AND  
ENGINEERS PVT LTD

Esteemed  
**CUSTOMERS**

*Foundrymen's FIRST Choice*

Happy to  
Help You



MANUFACTURERS OF ALL TYPES OF FOUNDRY EQUIPMENTS.

Plot No. 711, Gat No. 59, Sambhapur-  
Tasgaon Road, Sambhapur.  
Tal. Hatkanangle, Kolhapur. (MH) INDIA-122

+ 91 - 08698456310 /09860742943/09822441798  
akshayfounders@gmail.com  
sales.akshayfounders@gmail.com

